

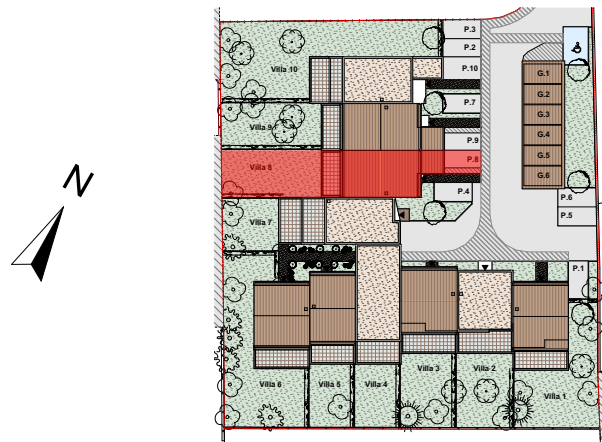
## DOMAINE DAVER

SCCV CAMPAGNE DAVER  
Allée Des PLATANES - 83000 TOULON

PLANS DE VENTE

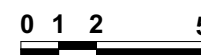
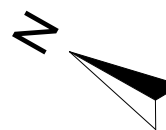
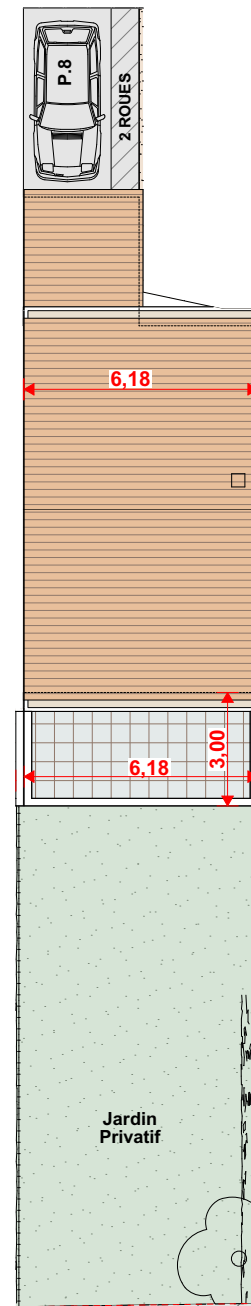
- 10/01/2023 -

LOT Villa 8 TMA- Garage Intégré - Parking P.8



	Pièces	Surfaces m <sup>2</sup>
RDC	Séjour/Cuisine	29,71
	Entrée <small>Compris Rangement</small>	8,26
	WC	1,32
	Rangement	1,38
R+1	Chambre 1	11,12
	Chambre 2	12,83
	Chambre 3	11,04
	Salle de Bains 2	3,61
	WC 2	1,31
	Dégagement	3,90
	<b>TOTAL</b>	<b>84,48 m<sup>2</sup></b>
	Garage	13,00
	Terrasse	17,30
	Jardin Privatif	85,67

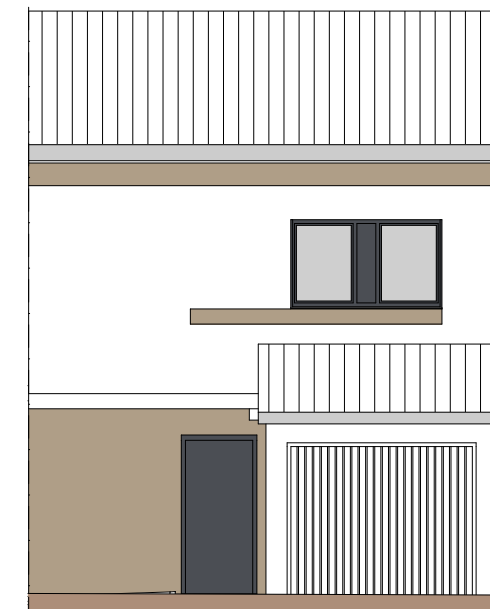
### Plan De Masse - 1:200



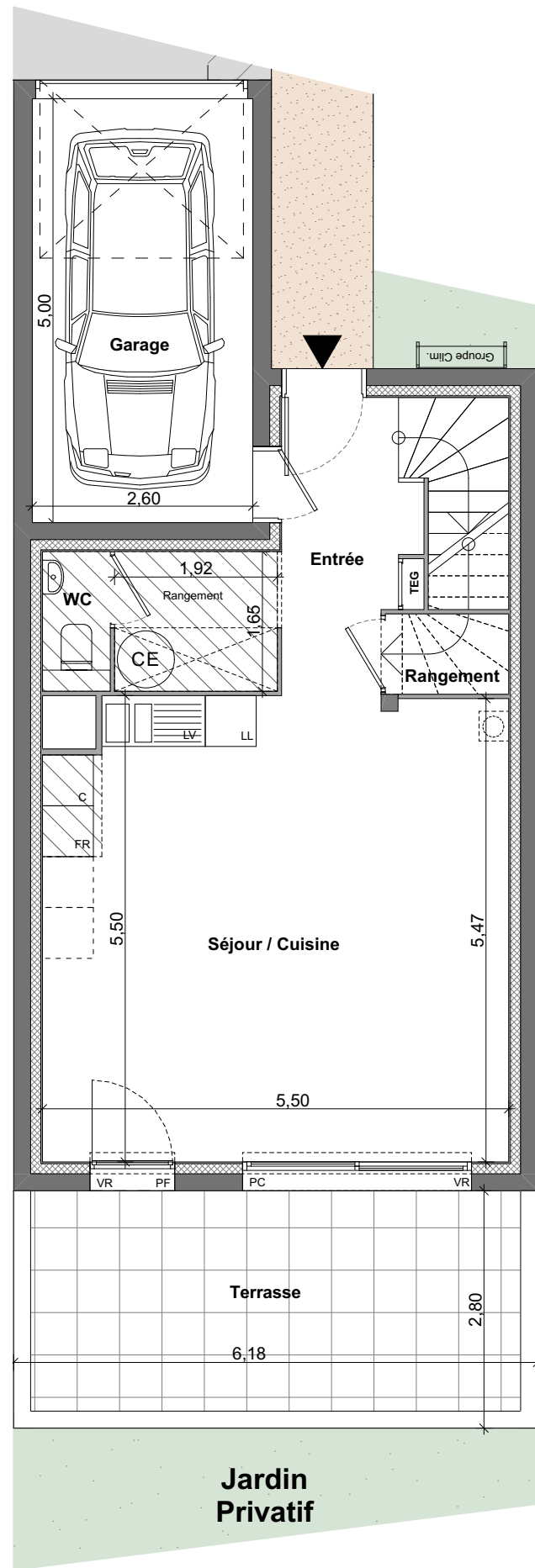
### VILLA 0



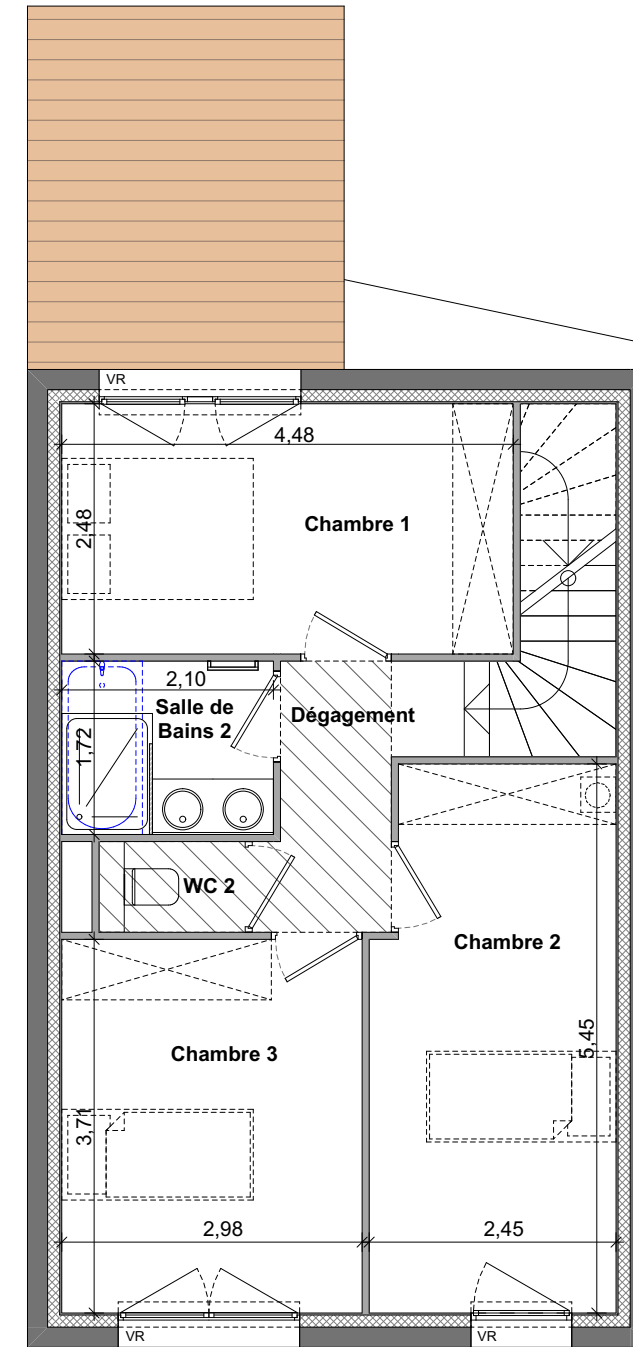
Façade OUEST






Façade EST



**Plan Rez de Chaussée - 1:75**



**Plan Niveau 1 - 1:75**

-  SOFFITE FAUX PLAFOND Ht ≥ 2.10m.
-  TABLEAU ELECTRIQUE
-  BALLON d'EAU CHAUDE
- PF** Porte Fenêtre
- PC** Baie Coulissante
- F** Fenêtre
- VR** Volets Roulants

