

**DOMAINE DAVER**

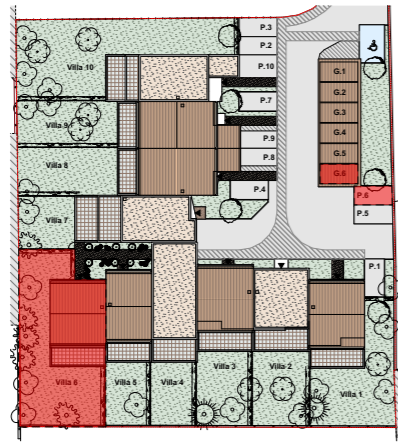
**SCCV CAMPAGNE DAVER**

Allée Des PLATANES - 83000 TOULON

**PLANS DE VENTE**

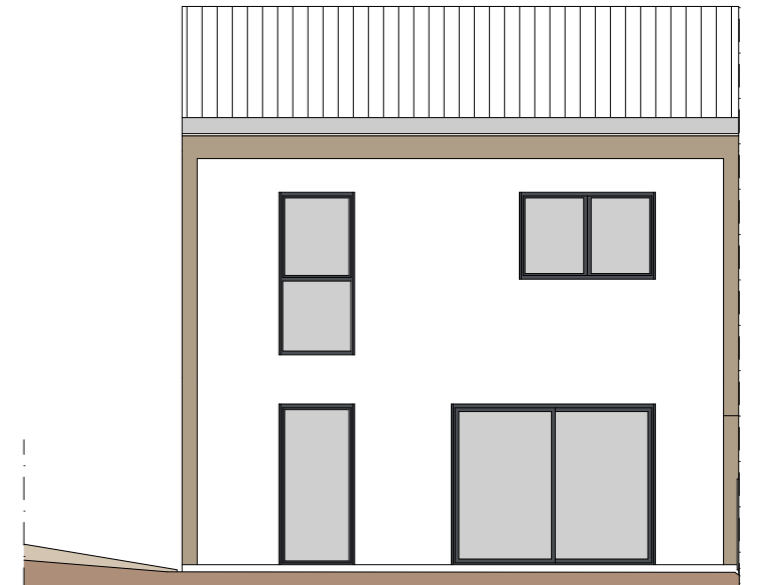
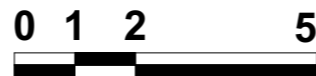
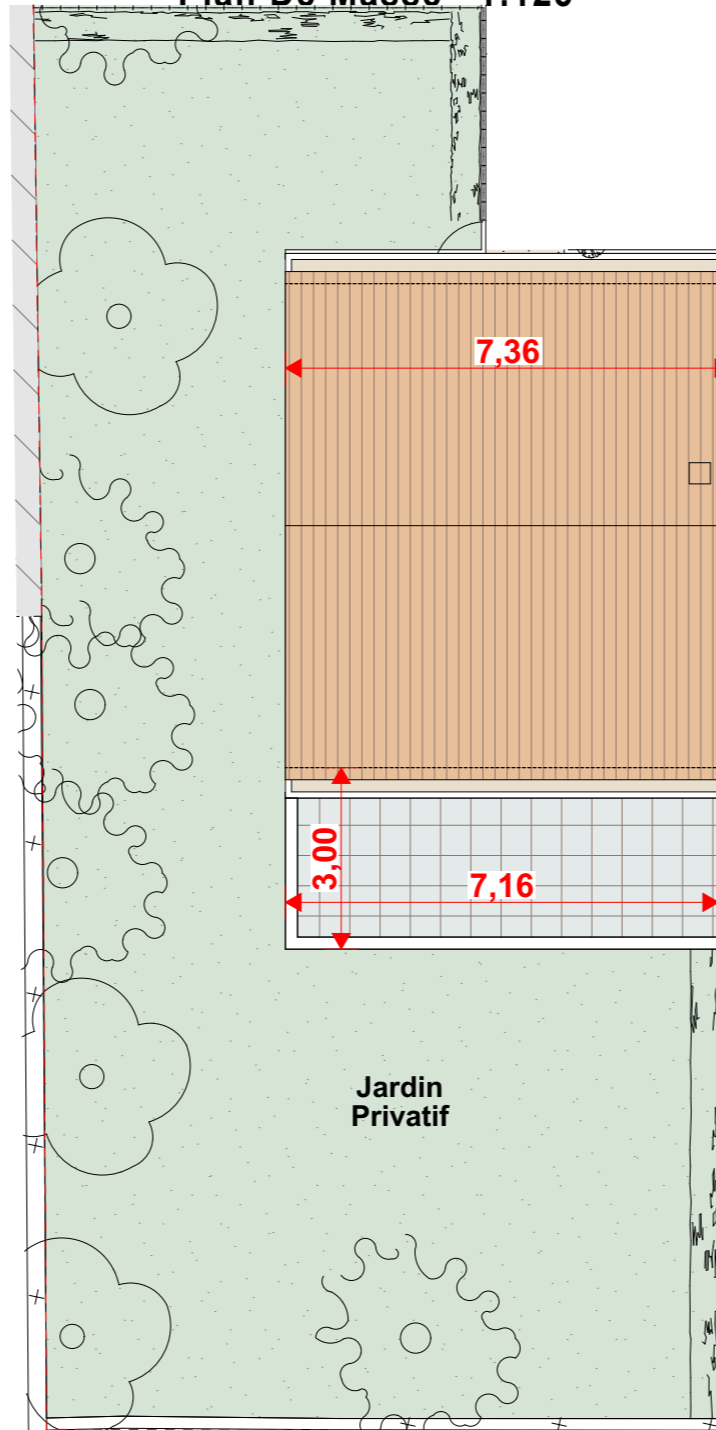
- 10/01/2023 -

**LOT Villa 6 TMA - Garage G.6 - Parking P.6**



	Pièces	Surfaces m <sup>2</sup>
RDC	Séjour/Cuisine	32,91
	Entrée	3,26
	WC	1,88
	Cellier	4,57
	Rangement	2,26
R+1	Chambre 1	11,31
	Chambre 2	12,06
	Chambre 3	9,88
	Salle de Bains 2	3,85
	WC 2	1,30
	Dégagement	3,46
<b>TOTAL</b>		<b>86,74 m<sup>2</sup></b>
	Garage	13,00
	Terrasse	19,95
	Jardin Privatif	166,45

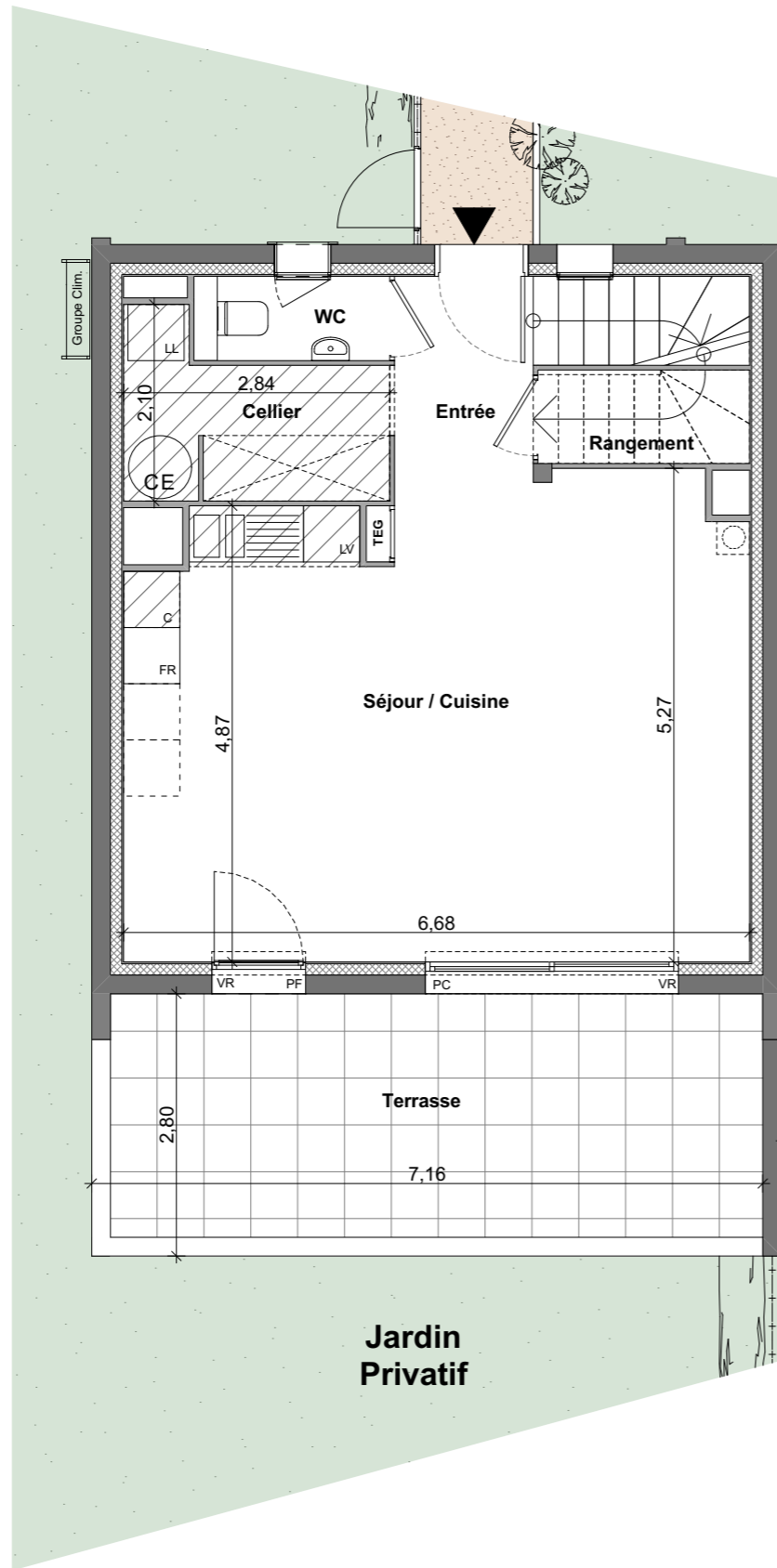
**Plan De Masse - 1:125**



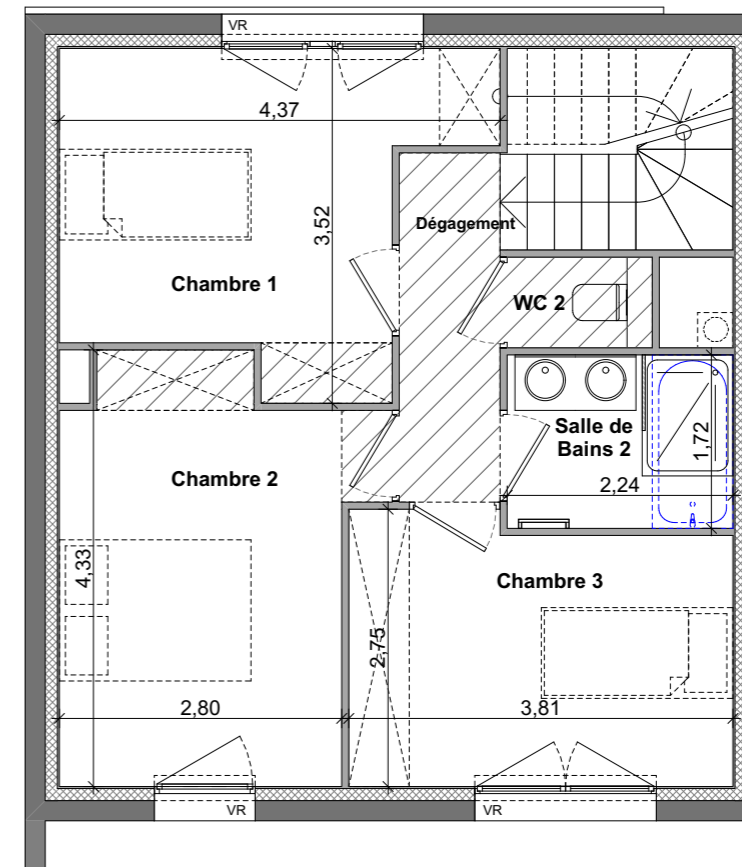
**Façade SUD**






**Façade NORD**



**Plan Rez de Chaussée - 1:75**



**Plan Niveau 1 - 1:75**

-  SOFFITE FAUX PLAFOND Ht ≥ 2.10m.
-  TABLEAU ELECTRIQUE
-  BALLON d'EAU CHAUDE
- PF** Porte Fenêtre
- PC** Baie Coulissante
- F** Fenêtre
- VR** Volets Roulants

