

DOMAINE DAVER

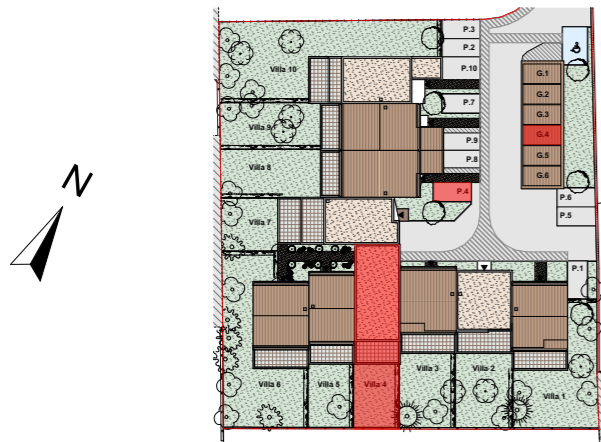
SCCV CAMPAGNE DAVER

Allée Des PLATANES - 83000 TOULON

PLANS DE VENTE

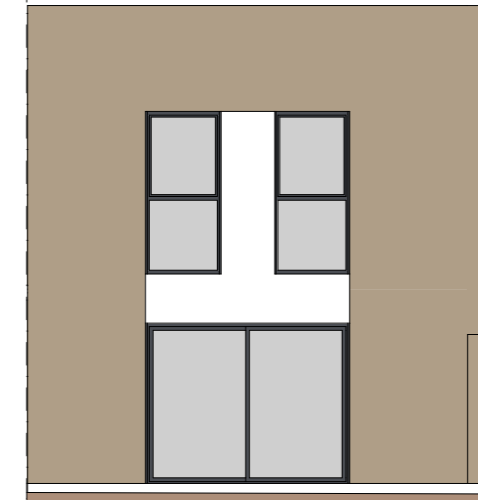
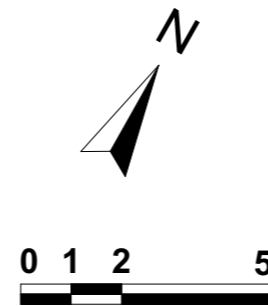
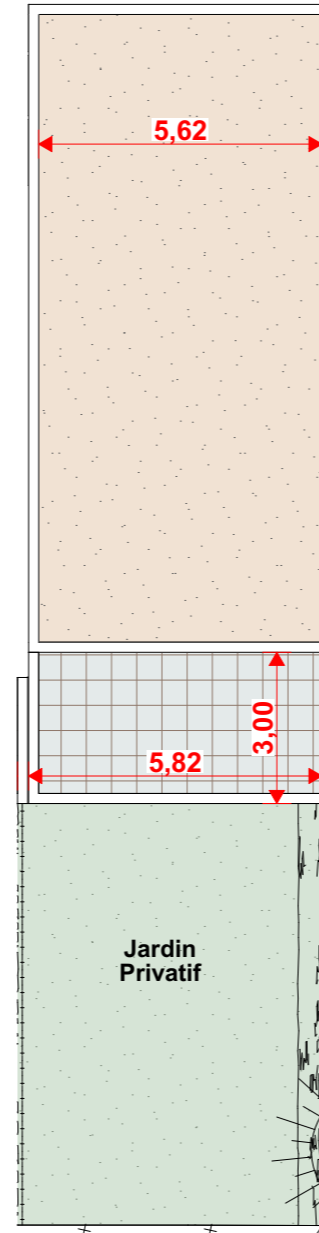
- 10/01/2023 -

LOT Villa 4 TMA - Garage G.4 - Parking P.4



	Pièces	Surfaces m ²
RDC	Séjour/Cuisine	30,69
	Entrée <small>Compris Rangement</small>	5,54
	WC	1,32
	Rangement	1,38
R+1	Chambre 1	18,76
	Chambre 2	11,15
	Chambre 3	11,67
	Salle de Bains 2	3,61
	Salle d'Eau	3,17
	WC 2	1,62
	Dégagement	3,93
	Dressing	4,27
TOTAL		97,11 m²
	Garage	13,00
	Terrasse	16,30
	Jardin Privatif	51,71

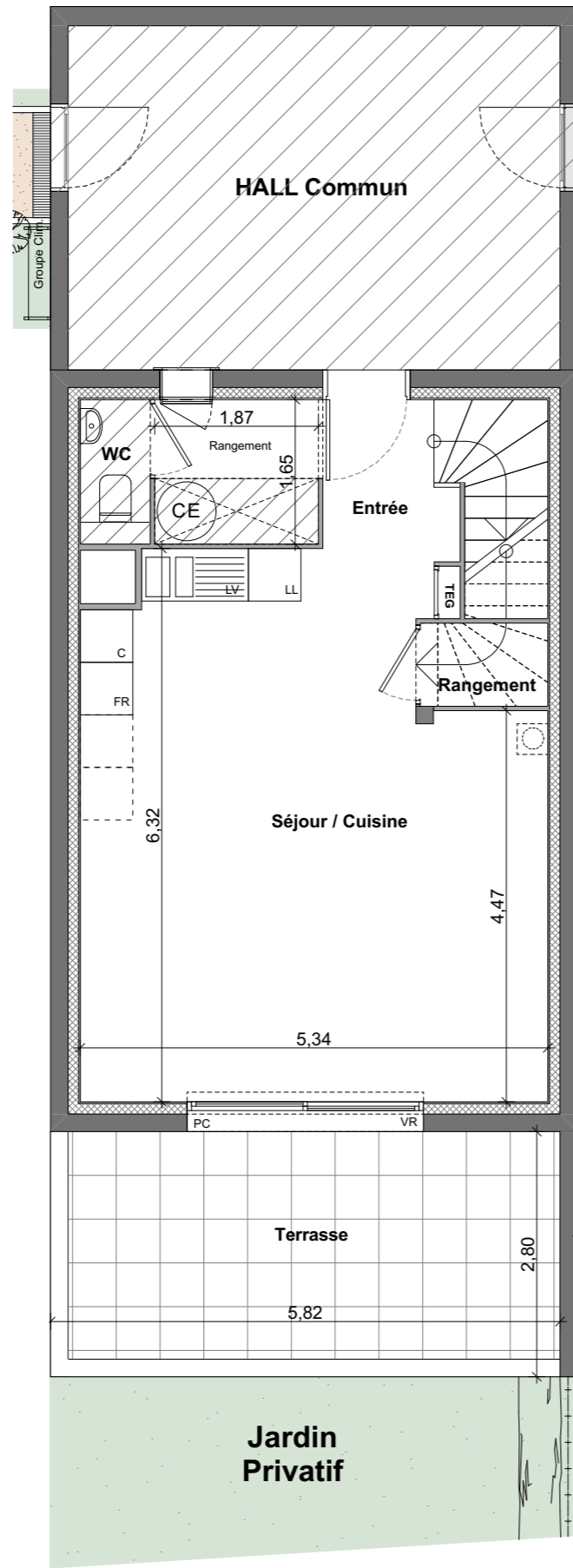
Plan De Masse - 1:150



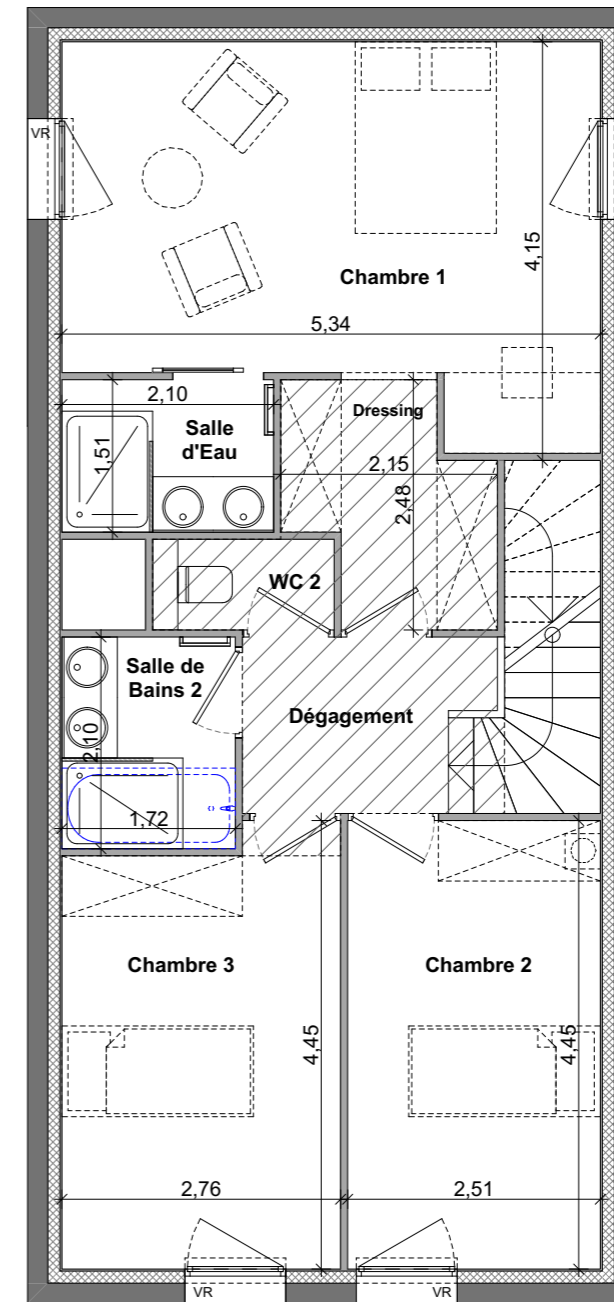
Façade SUD






Façade NORD



Plan Rez de Chaussée - 1:75



Plan Niveau 1 - 1:75

-  SOFFITE FAUX PLAFOND Ht ≥ 2.10m.
-  TABLEAU ELECTRIQUE
-  BALLON d'EAU CHAUDE
- PF** Porte Fenêtre
- PC** Baie Coulissante
- F** Fenêtre
- VR** Volets Roulants

