

DOMAINE DAVER

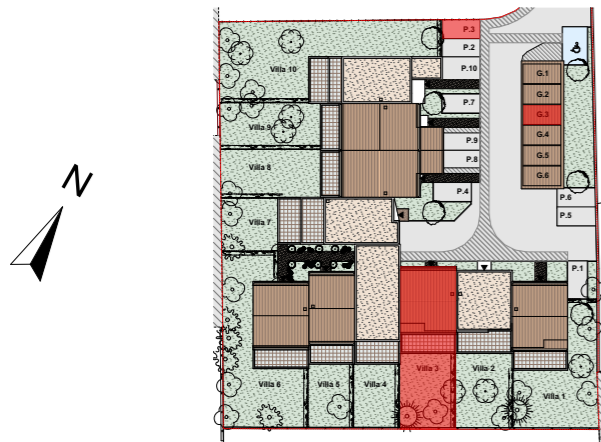
SCCV CAMPAGNE DAVER

Allée Des PLATANES - 83000 TOULON

PLANS DE VENTE

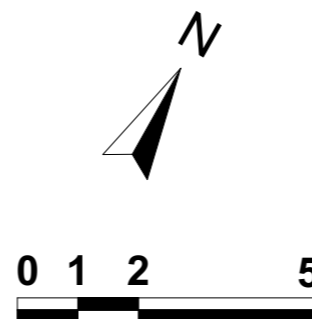
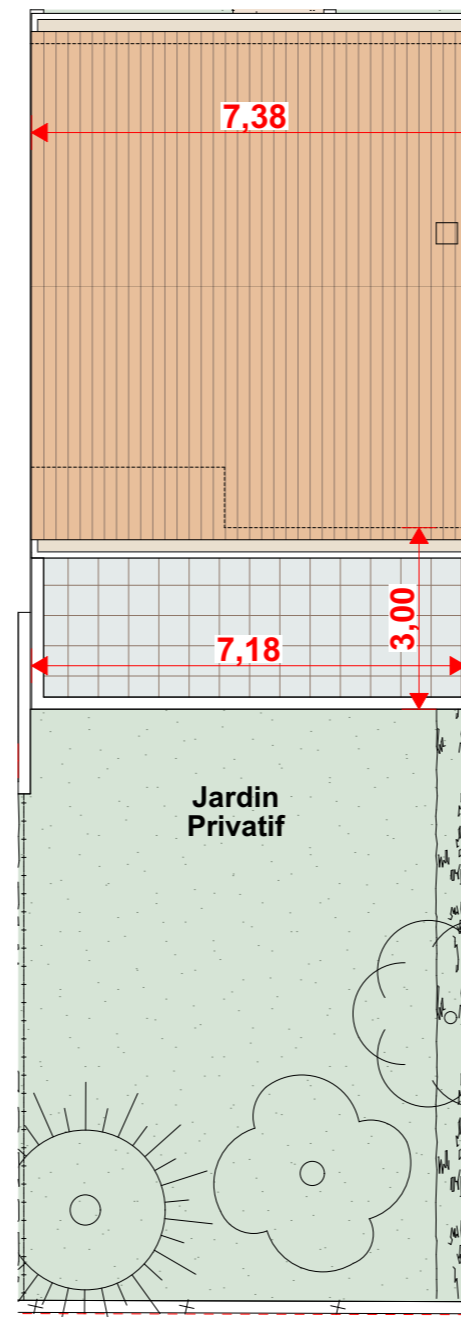
- 10/01/2023 -

LOT Villa 3 TMA - Garage G.3 - Parking P.3



	Pièces	Surfaces m ²
RDC	Séjour/Cuisine	32,90
	Entrée	3,30
	WC	1,88
	Cellier	4,57
	Rangement	2,26
R+1	Chambre 1	11,51
	Chambre 2	12,09
	Chambre 3	9,93
	Salle de Bains 2	3,85
	WC 2	1,30
	Dégagement	3,46
	TOTAL	87,05 m²
	Garage	13,00
	Terrasse	20,01
	Jardin Privatif	73,68

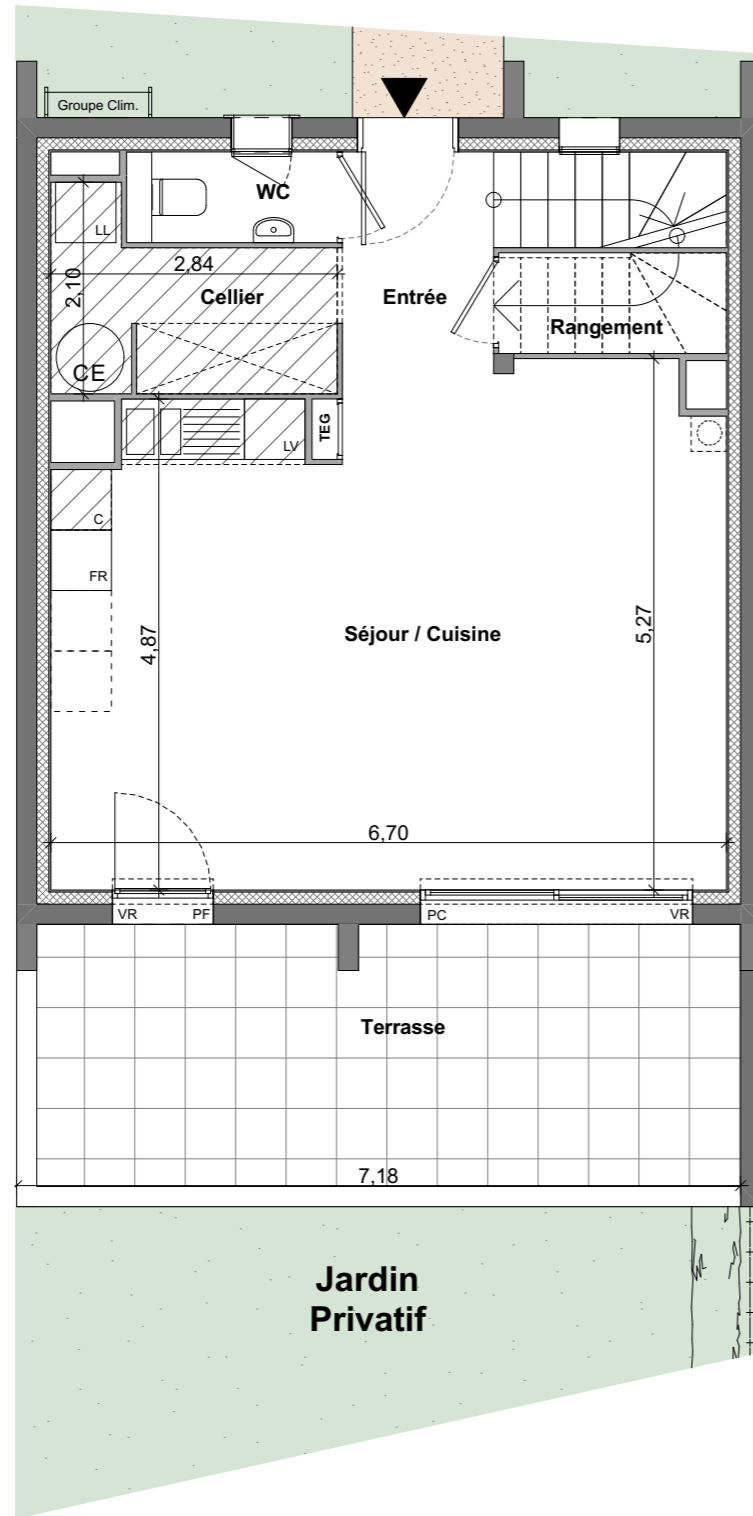
Plan De Masse - 1:125



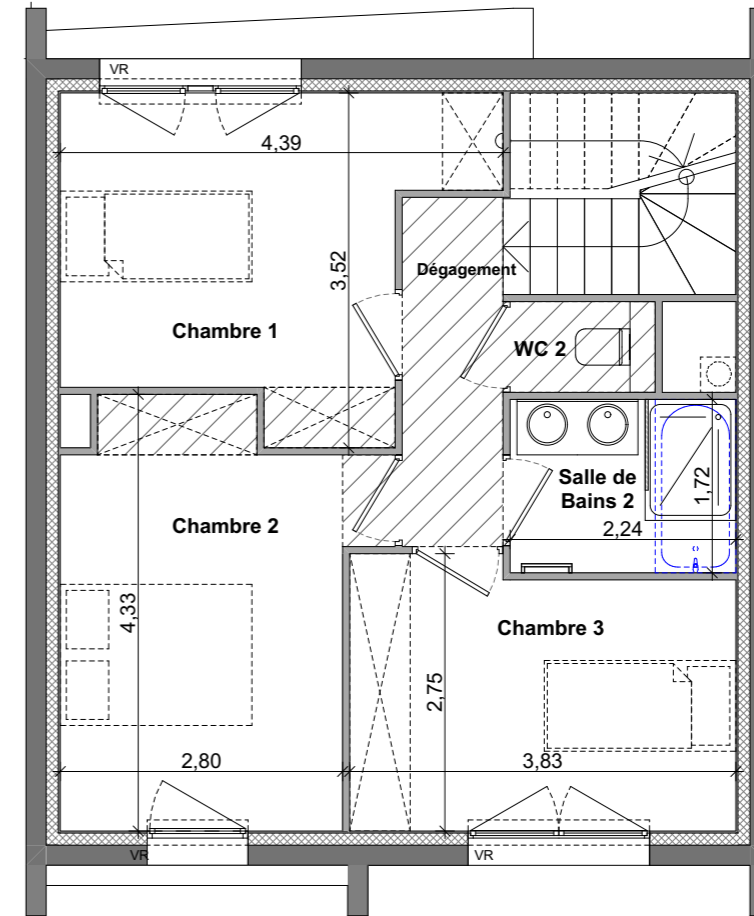
Façade SUD




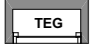

Façade NORD



Plan Rez de Chaussée - 1:75



Plan Niveau 1 - 1:75

-  SOFFITE FAUX PLAFOND Ht ≥ 2.10m.
-  TABLEAU ELECTRIQUE
-  BALLON d'EAU CHAUDE
- PF** Porte Fenêtre
- PC** Baie Coulissante
- F** Fenêtre
- VR** Volets Roulants

